

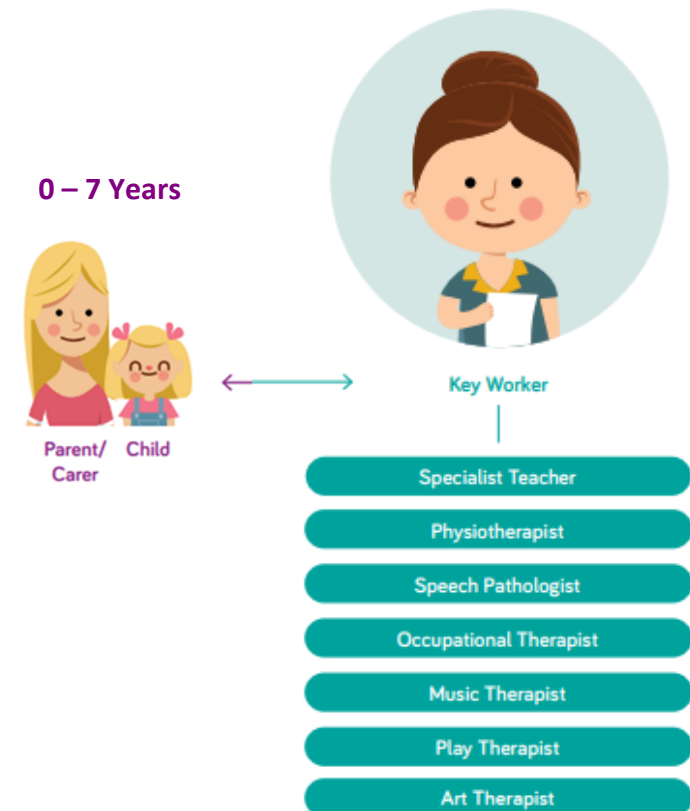
# Key Worker Model

Early Childhood Intervention Services (ECIS)



Our Early Childhood Development Key Worker model is recognised as best-practice in Early Childhood Intervention Services (ECIS) across the sector and under the NDIS. A Key Worker is a therapist from any discipline who is strategically selected as your main therapist and contact person. This means there is only one person for you and your child to get to know.

- Every child (0 – 7 years) is assigned to a Key Worker
- A Key Worker focus on the strengths of your child and family
- A Key Worker works with you to develop and work towards your child’s goals
- A Key Worker recognises that your child’s and family needs will change, and ensures that the goals in the Family Services and Support Plan are regularly reviewed with you
- Support services are tailored to meet your child’s individual needs and goals and to fit naturally into your family routine, home and community settings
- Information is provided in a way that builds up your confidence in making decisions and engaging in early years and community programs.



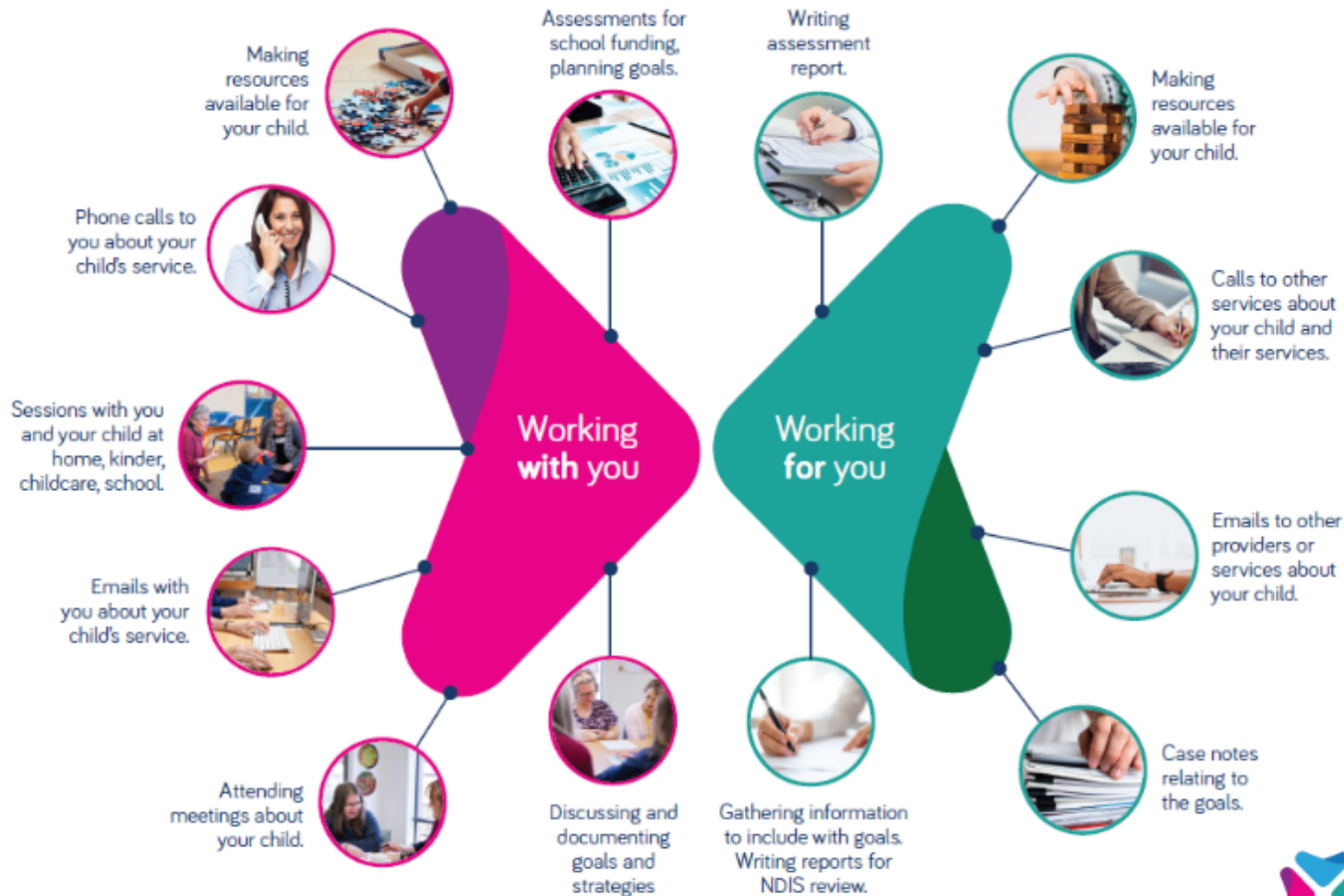
A hard copy of this document may be out of date – Check PROMPT for the current version

# Key Worker Model

Early Childhood Intervention Services (ECIS)



## Early Childhood Development Program - Key Worker Model



A hard copy of this document may be out of date – Check PROMPT for the current version